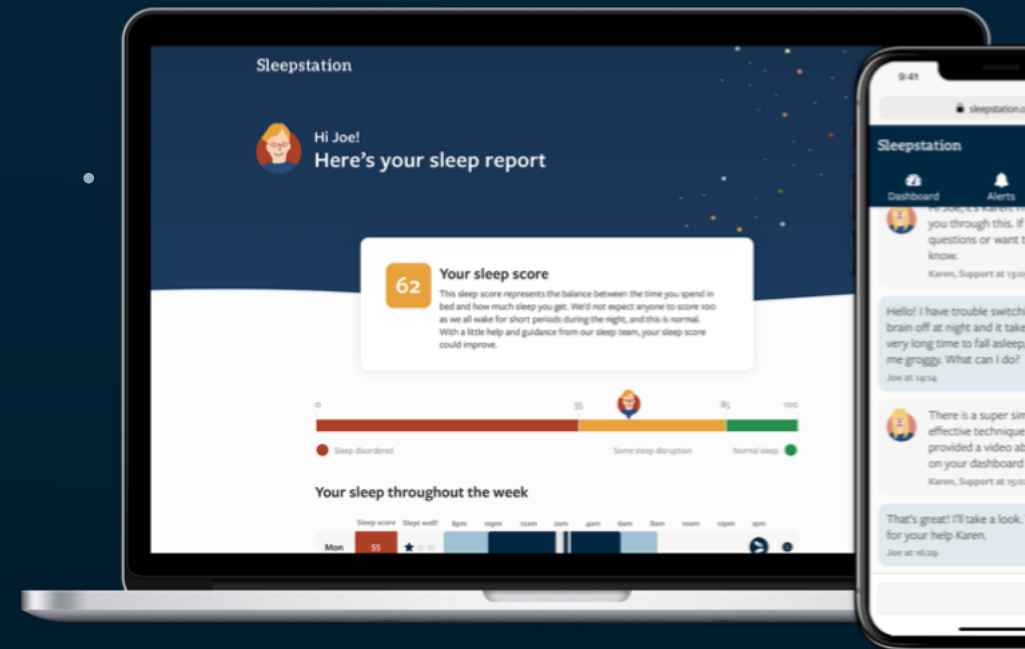


Sleepstation

Referring to Sleepstation

A clinically validated digital screening and support service for those experiencing sleep problems, including a full online programme of cognitive behavioural therapy for insomnia (CBTi). Our digital care pathway and person-centred approach incorporates dedicated, proactive human support and multi-disciplinary team input.

sleepstation.org.uk



v6 March 2023

© Sleepstation all rights reserved. The information contained in this document is confidential, and only for the information of the intended recipient/s and may not be used, published or redistributed without the prior written consent of Sleepstation.

What you need to know

This document is designed to give you the necessary information to refer appropriate NHS patients to Sleepstation. The choice of cognitive and behavioural intervention should be guided by clinical judgement, individual preference and availability.

Topics covered include:

- **What is Sleepstation?**
- **How does it work?**
- **What is CBTi?**
- **Evidence base**
- **NICE guidance for insomnia**
- **Why should I consider referring?**
- **What steps are involved?**
- **Treating insomnia without medication**
- **Who is Sleepstation suitable for?**
- **How do I refer?**
- **How do NHS patients get access?**
- **Screening for insomnia**
- **References**



What is Sleepstation?

Sleepstation is a clinically validated, digitally delivered, screening and support service for those experiencing sleep problems, including a full online programme of cognitive behavioural therapy for insomnia (CBTi).

[NICE recommends CBTi](#) as the first-line approach for chronic insomnia.

Sleepstation resolves insomnia symptoms and improves quality of life for more than 80% of service users who engage with the CBTi therapy and also delivers meaningful sleep improvements for those who access lower level intensity coaching and sleep support services.

- ✔ Clinically validated
- ✔ Evidence based
- ✔ Highly engaging
- ✔ Delivered entirely online
- ✔ Proven efficacy
- ✔ Gold-standard approach
- ✔ Few contraindications
- ✔ Fully supported
- ✔ Benign side-effect profile
- ✔ Personalised care



How does it work?

Delivered entirely online and carefully tailored to each individual, Sleepstation helps people identify the underlying causes of their sleep problem and provides the support and guidance needed to improve sleep.

Sleepstation has impressive engagement rates. 74% of NHS patients referred engage with the service.

The personalised support is what makes Sleepstation so effective. A multi-disciplinary team of coaches, medical and mental health professionals and sleep experts develop and monitor a programme of support to guide your patients through personalised sleep improvement plans.

NHS patients don't need to download an app to use Sleepstation. The NHS service is web-based.

Support is delivered asynchronously. Service users can access a wide range of resources to help them follow their plan and can complete therapy sessions in their own time. They can also access human support and guidance when they need it.

Sleepstation helps people sleep better without medication.



Akal

48, from Bristol

“The programme is well structured and the support provided is fantastic. The tools this programme has given me will lead to a means to go back and use them when needed in the future. Excellent interactive website and brilliant support.”

Akal had been sleeping badly for four years before he self-referred to Sleepstation.

What is CBTi?

Cognitive behavioural therapy for insomnia (CBTi) aims to improve sleep habits and behaviours by identifying and challenging thoughts and behaviours that affect a person's ability to sleep or sleep well.

Cognitive and behavioural interventions are effective in the treatment of long-term insomnia (1) and are widely recommended (2-8).

The cognitive therapy in a CBTi programme is **centred around sleep education, using this as a tool to target dysfunctional beliefs/attitudes about sleep.**

The type of cognitive therapy delivered within a CBTi programme is not synonymous with other forms of cognitive behavioural therapy, for example those designed to address anxiety or depression. **People who have not responded to CBT for depression may respond well to CBTi.**



Jane

62, from Leeds

“Sleepstation has changed my life. I now look forward to getting into bed because I know I will sleep. Having sleep tools has taken away my anxiety. I enjoy living now because the confusing ‘lack of sleep’ fog has been lifted.”

Jane had been struggling with insomnia for more than six years before she was signposted to Sleepstation.

What evidence is there for this approach?

NICE's clinical knowledge summary on insomnia summarises the latest evidence on managing insomnia in primary care and recommends that **CBTi is the first line treatment for chronic insomnia in adults of all ages**. CBTi has a large evidence base stretching back over 40 years. A recent statement from **NICE MTG-70 states that digital CBTi (dCBTi) is an effective therapy for insomnia**.

Sleepstation is novel in the dCBTi space as it combines digital presentation of CBTi with help/support/guidance from a team of **human sleep coaches**, supported by a multi-disciplinary team comprising experts from the fields of sleep medicine, behavioural psychology and mental health.

This is important as a network meta-analysis (Hasan et al. 2022) compared various forms of digital CBTi with face-to-face CBTi and concluded that **web-based CBTi with a therapist offers better outcomes than other forms of dCBTi (9)**.

A meta-analysis (Soh et al. 2020) indicates that **digital CBTi is non-inferior to face-to-face CBTi**. This confirms the finding of Anderson et al. 2014 (10) who showed that **Sleepstation is comparable in its outcomes to those obtained with face-to-face CBTi**, in regard to treatment success, magnitude of improvement and numbers completing therapy, an easily accessible and low-cost form of therapy for this common but untreated condition.

One possible reason why Sleepstation is as effective as face-to-face treatment as alluded to by Hasan et al 2022, is the use of human sleep coaches who can show empathy and understand the service user in the same way as a therapist would. This also perhaps accounts for the superior outcomes compared to fully automated dCBTi, however sophisticated an algorithm or AI may claim to be they cannot replicate empathy.

Xu and Anderson 2019 (11) showed that in a naturalistic study of Sleepstation in primary care 84% of patients who completed the course showed a meaningful improvement in sleep efficiency and quality (there was also a significant improvement in subjective ratings of depression).

NICE guidance for insomnia treatment

A systematic review and meta-analysis found that cognitive behavioural therapy alone can improve sleep for people with chronic insomnia, without the need for medication (9).

GPs are encouraged to refer to psychological services for a cognitive or behavioural intervention. However, the clinical need remains unmet because there is a shortage of practicing insomnia specialists. The focus of many IAPT services within the NHS is on anxiety and depression with relatively few practitioners experienced in CBTi.

Referring to Sleepstation's online CBTi programme allows you to refer in line with guidance.

While the NICE guidelines imply that insomnia is treated within primary care, the study by Gardiner and Stanley 2020 (32), showed that even outside the traditional route of treatment for insomnia i.e., via a GP, Sleepstation has a significant benefit for the vast majority of people who completed the course.

"Offer cognitive behavioural therapy for insomnia (CBTi) as the first-line treatment for chronic insomnia in adults of any age"

NICE National Institute for Health and Care Excellence

Why should I consider referring to Sleepstation?

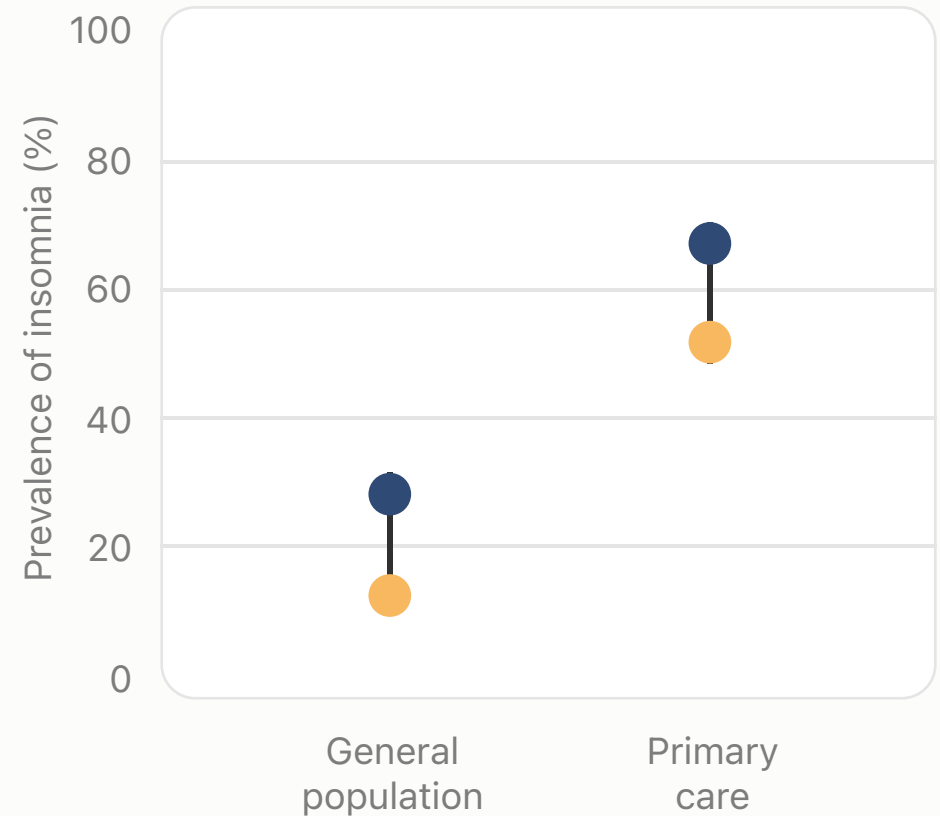
Sleeping well is essential to physical health and emotional wellbeing. To feel well, we must sleep well.

Insomnia disorder remains the most commonly reported sleep disorder. Estimates of the prevalence depend on the criteria used to define insomnia and the population studied and range from 10-30% (13-14).

The prevalence of insomnia in **primary care** patients has been reported to be as high as 69%, with 50% reporting occasional insomnia and 19% reporting chronic insomnia (15).

10% of the UK population visit their GP each year with sleep related issues (16), making sleep a major clinical problem and contributing significantly to the strain on GP resources.

In a systematic review and meta analysis published in Dec 2022 (33) looking at the prevalence and long-term health effects of **long-COVID** among hospitalised and non-hospitalised populations found impaired sleep to be in the top five most prevalent symptoms.



What steps are involved?

Sleepstation is a personalised service tailored to individual needs and circumstances. **The first step is screening and assessment.** Our sleep support programme may not be the right option for everyone. We screen all referrals and provide full explanations if we can't support the person. Our **care navigators** can signpost service users to other services, where relevant. **There are no waiting lists.**

Personalised sleep support is provided to all services users, who also have access to a wide range of resources and self-help tools. Programmes of support are tailored to individual needs and typically last 3-9 weeks.

The next step is a detailed sleep review. Each service user is provided with a personalised report containing recommendations that they can discuss with their coaches.

Those accessing the CBTi therapy services are provided with personalised sleep improvement plans, based on their review. Therapy sessions are delivered asynchronously and users can discuss their progress and access support from our sleep team via a **secure online messaging system available throughout the course.**



Treating insomnia without medication

To treat insomnia, medications (especially sedative hypnotics) have been used because of their quick effects in a short time period (17). However, medication for insomnia can present several adverse effects (18) and addiction during long-term use (19). Moreover, medication has a limited effect on the long-term relief of insomnia (20).

Pharmacological therapy is generally not recommended for the long-term management of insomnia (12).

With a shortage of practicing insomnia specialists within the UK (fewer than 10 specialist centres), patients can wait many months, or even years, to see someone. This has left GPs and other healthcare providers little option but to recommend alternative, less effective treatments, and revert to hypnotic prescribing.

Sleepstation can effectively address all forms of insomnia without medication.



Richard

45, from Maidstone

*“This course has been fantastic. **The results, have been life changing.** I look forward to going to bed. This course has given me the confidence and tactics to further improve my sleep in the future. **Without sleeping pills!** Thank you.”*

Richard had been taking sleeping pills for more than three years before he tried Sleepstation.

Risks associated with hypnotic prescribing

Hypnotic drugs are not recommended for long-term use as there are concerns regarding their safety (2, 21-23). Potential adverse effects include daytime sedation, poor coordination, cognitive impairment and related concerns about the increased risk of driving accidents and falls.

In older people, in particular, the magnitude of the beneficial effect of hypnotics may not justify the increased risk of adverse effects (such as cognitive impairment and increased risk of falls).

Long-term use of hypnotics can lead to the development of tolerance, physical or behavioural dependence, adverse effects on withdrawal, rebound insomnia and increased mortality.



How can Sleepstation help?

Technology is rewriting the relationship between patients, professionals and care providers. Patients are taking greater control of their health and tools for patient empowerment and self-management provide opportunities for patients' active participation in their care.

Digital support services like Sleepstation can deliver customisable, quality care at a fraction of the cost of existing treatments.

Sleepstation can provide your patients with the support and guidance needed to help them sleep well.



Who is Sleepstation suitable for?

Please use clinical judgement to determine if Sleepstation is right for your patient. Contraindications generally stem from the sleep deprivation aspect inherent in sleep restriction therapy - a core therapeutic method used within CBTi that is recommended to all service users accessing therapy services, with the exclusion of pregnant people.

Those with the following conditions or disorders should not use Sleepstation:

- Epilepsy, bipolar disorder, a personality disorder, schizophrenia or other psychotic spectrum disorders.
- Very severe untreated generalised anxiety (this should be addressed first).
- History of psychosis/psychotic episodes, seizures or acute PTSD.
- Parasomnias
- High risk of fall.

We cannot accept referrals for people who are:

- under 18 years of age.
- pregnant and have any pregnancy related complications or risk factors (including age, obesity, chronic health condition and/or lifestyle factors such as smoking or alcohol use).
- currently undergoing CBT with another provider.
- currently receiving psychiatric support (unless referred by the psychiatrist).
- unable to use a computer/smart phone and access the internet daily.

Please be advised, sleep restriction therapy will not be offered to pregnant people, but other cognitive and behavioural support will be provided. In some cases where the sleep issues are related exclusively to discomfort related to pregnancy the person may not gain much benefit.

Variable shift workers who transition between day and night shifts frequently are unlikely to gain significant benefit.

How do I refer?

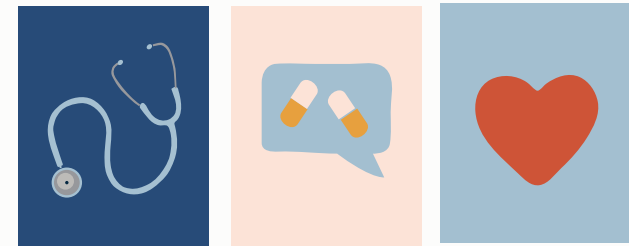
The choice of cognitive and behavioural intervention should be guided by clinical judgement, individual preference, and availability.

Consider referring to Sleepstation:

- When a person complains of sleep problems lasting longer than four weeks with impact on next day function.
- When a person presents with low mood and associated sleep disturbance.
- When it is desirable to taper off hypnotic medications.

Sleepstation is available via electronic referral only. Referrals can be submitted via GP/clinic systems or made by emailing a completed copy of our referral form to tnu-tr.sleepstation@nhs.net from nhs.net email accounts only.

If you do not have a copy of our referral form, a blank copy can also be requested by email.



How do NHS patients get access to Sleepstation?

People gain most benefit from CBT when it is delivered in a timely manner. Readiness to change drives effective outcomes. Long waiting lists can therefore reduce adherence.

There are no waiting lists to access Sleepstation and, where contract terms permit, NHS patients can self-refer via our website.

Following screening and verification (NHS number check), our onboarding team contact NHS patients directly via their preferred contact method (telephone, text or email) to help them get started.



Insomnia and its effects

Insomnia disorder is defined as difficulty initiating sleep, difficulty maintaining sleep or early morning awakening **with subsequent impact upon daytime function.**

It is associated with daytime fatigue, reduced quality of life and increased ill health across a range of studies (24, 25) and represents a critical public health problem worldwide (26).

Insomnia commonly accompanies conditions such as depression and chronic pain but often persists even after successful resolution of these 'primary' conditions (1). Presence of insomnia has been found to predict subsequent depression or anxiety in those with a first episode of mood disorder (6, 19 -20).

It is also a risk factor for the development of hypertension, diabetes and heart disease (27-30) and is associated with increased healthcare costs (31).



Screening for insomnia

If your patient has one of more of the following symptoms, then they could have insomnia.

- Difficulty falling asleep
- Difficulty staying asleep (waking up during the night and having trouble returning to sleep)
- Waking up too early in the morning
- Un-refreshing sleep (also called “non-restorative sleep”)

To be indicative of insomnia, these symptoms need to lead to daytime consequences including:

- Fatigue or low energy
- Cognitive impairment, such as difficulty concentrating
- Mood disturbance, such as irritability
- Behaviour problems, such as feeling impulsive or aggression
- Difficulty at work
- Difficulty in personal relationships, including family, friends and caregivers



References

1. Morin,C.M., Bootzin,D.J., Edinger,J.D., et al. (2006) Psychological and behavioral treatment of insomnia: update of the recent evidence (1998-2004). *Sleep*. 29(11), 1398-1414.
2. National Institutes of Health (2005) NIH State-of-the-Science conference statement on manifestations and management of chronic insomnia in adults. National Institutes of Health. www.consensus.nih.gov.
3. Morgenthaler,T., Kramer,M., Alessi,C., et al. (2006) Practice parameters for the psychological and behavioral treatment of insomnia: an update. An American Academy of Sleep Medicine report. *Sleep*. 29(11), 1415-1419.
4. Budur,K., Rodriguez,C. and Foldvary-Schaefer,N. (2007) Advances in treating insomnia. *Cleveland Clinic Journal of Medicine*.74(4), 251-266.1.6.5.7.8.9.10.2.3.4
5. Schutte-Rodin,S., Broch,L., Buysse,D., et al. (2008) Clinical guideline for the evaluation and management of chronic insomnia in adults. *Journal of Clinical Sleep Medicine*. 4(5), 487-504.
6. Falloon,K., Arroll,B., Elley,C.R. and Fernando 3rd,A. (2011) The assessment and management of insomnia in primary care.*BMJ*. 342, d2899.
7. Buysse,D.J. (2013) Insomnia. *JAMA*. 309(7), 706-716.
8. <https://cks.nice.org.uk/insomnia#!scenario:1>
9. Hasan F, Tu YK, Yang CM, Gordon CJ, Wu D, Lee HC, Yuliana LT, Herawati L, Chen TJ, Chiu HY. Comparative efficacy of digital cognitive behavioral therapy for insomnia: A systematic review and network meta-analysis. *Sleep Medicine Reviews*. 2022 Feb 1;61:101567.
10. Anderson KN, Goldsmith P, Gardiner A. A pilot evaluation of an online cognitive behavioral therapy for insomnia disorder - targeted screening and interactive Web design lead to improved sleep in a community population. *Nat Sci Sleep*. 2014 Mar 17;6:43-9. doi: 10.2147/NSS.S57852. PMID: 24669197; PMCID: PMC3962311.

11. Xu, Z., & Anderson, K. (2019). Real-world evaluation of digital CBT for insomnia in the primary care setting – many should not log on to doze off. *The Cognitive Behaviour Therapist*, 12, E39. doi:10.1017/S1754470X19000242
12. Wise J. Cognitive behavioural therapy can help chronic insomnia, review finds. *BMJ*. 2015; 350: h3076 doi: 10.1136/bmj.h3076
13. Simon, G.E. and VonKorff, M. (1997) Prevalence, burden, and treatment of insomnia in primary care. *American Journal of Psychiatry*. 154(10), 1417-1423.
14. Roth T. Insomnia: definition, prevalence, etiology, and consequences. *J Clin Sleep Med JCSM Off Publ Am Acad Sleep Med*. 2007;3(5 Suppl):S7–S10.
15. Shochat, T., Umphress, J., Israel, A.G. and Ancoli-Israel, S., 1999. Insomnia in primary care patients. *Sleep: Journal of Sleep Research & Sleep Medicine*.
16. Wilson, S., Anderson, K., Baldwin, D., Dijk, D.J., Espie, A., Espie, C., Gringras, P., Krystal, A., Nutt, D., Selsick, H. and Sharpley, A., 2019. British Association for Psychopharmacology consensus statement on evidence-based treatment of insomnia, parasomnias and circadian rhythm disorders: An update. *Journal of Psychopharmacology*, 33(8), pp.923-947.
17. Becker PM. Hypnosis in the Management of Sleep Disorders. *Sleep Med Clin*. 2015; 10: 85–92.
18. Vermeeren A. Residual effects of hypnotics: epidemiology and clinical implications. *CNS Drugs*. 2004;18: 297–328.
19. Takaesu Y, Komada Y, Asaoka S, Kagimura T, Inoue Y. Factors associated with long-term use of hypnotics among patients with chronic insomnia. *PLoS One*. 2014; 9: e113753 doi:10.1371/journal.pone.0113753 eCollection 2014.22.21.20.26.27.28.23.24.25.
20. Chen PL, Lee WJ, Sun WZ, Oyang YJ, Fuh JL. Risk of dementia in patients with insomnia and long-term use of hypnotics: a population-based retrospective cohort study. *PLoS One*. 2012; 7: e49113 doi:10.1371/journal.pone.0049113 Epub 2012 Nov 7.
21. Holbrook, A.M., Crowther, R., Lotter, A., et al. (2000) Meta-analysis of benzodiazepine use in the treatment of insomnia. *Canadian Medical Association Journal*. 162(2), 225-233.
22. Sateia, M. and Nowell, P.D. (2004) Insomnia. *Lancet*. 364(9449), 1959-1973.
23. Ramakrishnan, K. and Scheid, D.C. (2007) Treatment options for insomnia. *American Family Physician*. 76(4), 517-526.

- 24.** Espie CA, Kyle SD, Hames P, Cyhlarova E, Benzeval M. The daytime impact of DSM-5 insomnia disorder: comparative analysis of insomnia subtypes from the Great British Sleep Survey. *J Clin Psychiatry*. 2012;73(12):1478–1484.
- 25.** Roth T, Ancoli-Israel S. Daytime consequences and correlates of insomnia in the United States: results of the 1991 National Sleep Foundation Survey. II. *Sleep*. 1991;22(Suppl 2):S354–S358.
- 26.** Institute of Medicine (US) Committee on Sleep Medicine and Research; Colten HR, Altevogt BM (2006). *Sleep Disorders and Sleep Deprivation: An Unmet Public Health Problem*. <https://www.ncbi.nlm.nih.gov/books/NBK19958/>
- 27.** Neckelmann D, Mykletun A, Dahl AA. Chronic insomnia as a risk factor for developing anxiety and depression. *Sleep*. 2007;30:873–880. doi: 10.1093/sleep/30.7.873.12.11.18.17.16.19.13.14.15
- 28.** Ellis JG, Perlis ML, Bastien CH, et al. The natural history of insomnia: acute insomnia and first-onset depression. *Sleep* 2014;37:97–106. 10.5665/sleep.3316.
- 29.** Phillips B, Mannino DM. Do insomnia complaints cause hypertension or cardiovascular disease? *J Clin Sleep Med*. 2007 Aug 15;3(5):489–94.
- 30.** Knutson KL, Ryden AM, Mander BA, Van Cauter E. Role of sleep duration and quality in the risk and severity of type 2 diabetes mellitus. *Arch. Intern. Med*. 2006 Sep 18;166(16):1768–74.
- 31.** Wilson SJ, Nutt DJ, Alford C, Argyropoulos SV, Baldwin DS, Bateson AN, et al. British Association for Psychopharmacology consensus statement on evidence-based treatment of insomnia, parasomnias and circadian rhythm disorders. *J. Psychopharmacol. (Oxford)*. 2010 Nov;24(11):1577–601.
- 32.** A Gardiner, N Stanley, 0527 The Uptake of a Free Digital CBTi Programme in a Large Commercial Organisation, *Sleep*, Volume 43, Issue Supplement_1, April 2020, Pages A201–A202, <https://doi.org/10.1093/sleep/zsaa056.524>
- 33.** DOI:<https://doi.org/10.1016/j.eclinm.2022.101762>